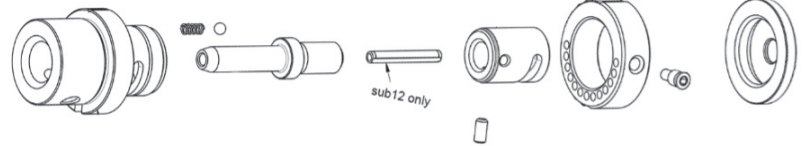


ADDENDUM – XR2 POWER WHEEL

The Commander, Sniper, and many Ranger XR2 models feature a 13-position power wheel that works in conjunction with the existing three-position transfer port selector. Together, these controls provide up to 39 distinct power settings on each rifle, offering an exceptional level of adjustability.

Each click of the power wheel typically changes muzzle velocity by approximately 5–10 feet per second (fps), depending on calibre and the rifle's overall power output.



The power wheel is more than a simple spring-tension adjuster. It incorporates a patented worm-drive system that enables precise and repeatable control of hammer spring tension with every adjustment.

BRK-Brocock recommends making power adjustments with the hammer spring un-tensioned whenever possible, as this minimises wear on the power adjustment mechanism and helps ensure long-term reliability.

